

**Overview**

Eye of the Storm® (EYE) is network management software that delivers on the promise of proactive business resource management. EYE's contemporary solution combines network performance, availability and resource management in one powerful triple advantage of capability. It is the first in the industry to support Green IT Initiatives for energy cost reductions as well as diminishing a company's environmental impact.

**Eye of the Storm Enterprise Capabilities Overview**

To manage diverse, dynamic network infrastructures and effectively support strategic business objectives, IT operations must overcome three limitations:

- **First, you can't use what you don't know you have.** Easing performance bottlenecks and optimizing resource investments requires a dynamic and detailed inventory of resources, their dependencies and current usage levels.
- **Second, too much data and not enough information.** Transforming data into actionable information requires an intelligent management application to normalize unlike data. Managers should expect correlation of assets being managed with related performance metrics and fault data without slowing the network. Better information means better reports, and more of them—from both a business perspective and IT vantage point.
- **Third, it's not efficient to treat every problem the same.** Network managers can't afford the same level of attention to every problem and should rely on management applications to prioritize response – whether it's troubleshooting to restore service or tuning performance to prevent an impending failure.

By overcoming these limitations, IT can achieve greater network reliability, identify the specific causes of problems and their ownership, and automate processes.

**Entuity's Network Management Suite**

EYE delivers proactive business resource management through a comprehensive and integrated solution that combines fault, performance and inventory management—accessible through a single user interface.

- EYE's fault management distinguishes between network, server and application problems using root cause analytics, prioritizing them based on business impact.

- EYE's performance management provides early warning of degrading performance protecting users from costly business interruptions.
- EYE's inventory management builds an ample database of network assets, their dependencies in parent-child and peer-to-peer relationships, and their physical connectivity--- updated automatically guaranteeing accuracy.
- EYE accommodates future growth by scaling up--utilizing multiple EYE servers for management of larger IT environments and allowing both the web UI and reporting system to span across these multiple EYE servers.
- EYE supports High Availability deployment keeping networks operating 24/7 protecting mission-critical service delivery.

#### With Eye of the Storm:

- You know what you have and how to optimize resources for sustained levels of service
- You have the information you need to take control and initiate actions to prevent failures
- You have information and trend data to help prioritize network upgrades and changes.

#### Eye of the Storm Provides:

- Agent-less discovery of network infrastructures including accurate resource utilization.
- Knowledge of hundreds of devices, including ATM, frame relay, VPN, their key performance metrics and properties like port, VLAN module, serial number, OS, firmware revision, chassis data. New devices are easily added.
- Real-time monitoring of the entire network.
- Analytics that automatically isolate network outage faults and preemptively alert on degrading performance to prevent costly service interruptions.
- Customizable display and alerts – the right information to the right person in real-time.
- The EYE InSight Center™ contains three Perspectives—Green IT, Services Delivery and Network Delivery dashboards that track and report key business-centric initiatives.

#### Powerful Analytics Just Make It Simple

With EYE, you visualize the potential of each resource compared with actual utilization. Using this analysis you can redistribute demand to under-utilized resources. The same analysis validates that changes were successfully implemented according to specification.

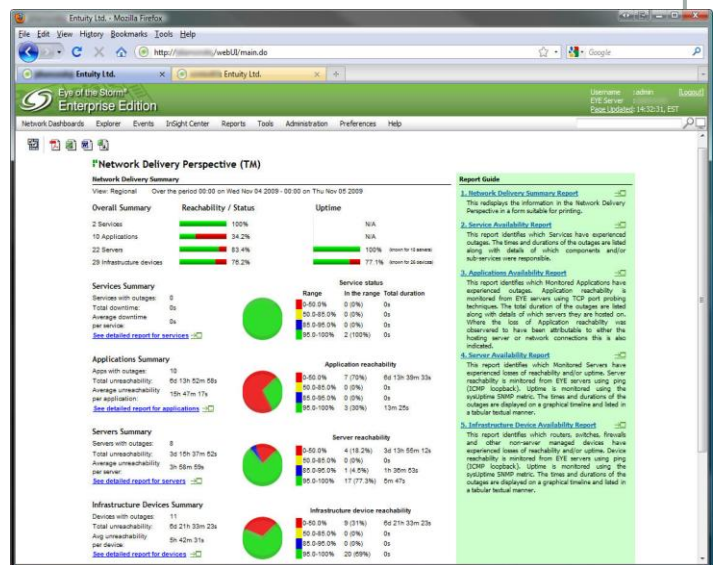
EYE enables users to set different thresholds or service levels for diverse resource groups,

customers and applications, and at different levels of specificity. For example, port utilization thresholds can be set for the global view, for selected devices or for a particular port or ports.

EYE monitors and analyzes metrics to define:

- **Congestion:** compares the packets sent by the port to those unable to be transmitted
- **Application availability:** computes the percentage of time an application is available measured at the application, application server, or network level
- **Application latency:** measures the delay in application response
- **Mean Time Between Failures (MTBF):** computes the average time between resource failures and is measurable against the network, application, application server, and/or WAN link level
- **Mean Time To Repair (MTTR):** computes the average time to repair a resource failure and is measurable at the application, application server, network, and/or WAN link level
- **Utilization measures:** compares utilization against CPU, bandwidth, or line.

EYE is well known for its quick installation and deployment, short training time, and ease of



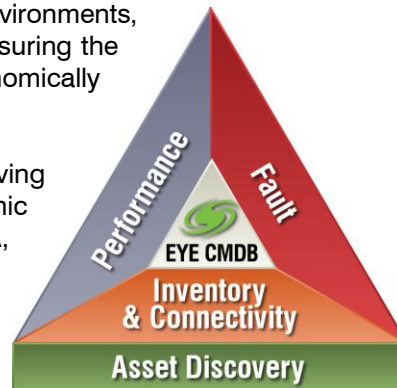
EYE reports are tailored for CIOs, IT managers, and network operators.

management and administration. It adapts to the managed environment with integration through a common API. EYE can be used as a complete, stand-alone network management solution or as an essential complement to an in-place manager of managers. EYE is up and running in hours.

## Eye of the Storm Summary

Entuity® offers a complete line of contemporary network management solutions for reducing operational costs while improving services delivery – affordable enterprise class management. Eye of the Storm® (EYE) network management solutions enable IT organizations to quickly and materially reduce costs, and to deliver - and prove - the service levels expected by its customers. EYE gives you insight, control, and predictability of your network's performance and availability - from the core to the edge - with a range of products at price points to match your business model. The EYE product line helps businesses realize the maximum benefit of today's distributed applications, virtualized environments, network-based services, and contemporary data sharing strategies by ensuring the foundational resource for all these initiatives – the network – is economically deployed and optimally performing.

Entuity's customers include Global 2000 companies proactively solving mission-critical business initiatives, leveraging complex and dynamic distributed network environments. A sampling includes: ABB, ACSA, Amtrak, Astra Zeneca, BMC Software, IBM Global Services, Perot Systems, The Royal Bank of Scotland, SASSA, Sony, Visteon, and WorldPay.



## Eye of the Storm Enterprise Network Suite

EYE Enterprise Network Suite is the company's flagship scalable, multi-server solution for medium to large enterprises managing the largest and most dynamic networks for some of the most demanding organizations in the world. EYE Enterprise delivers network control and predictability enabling enterprises, system integrators and MSPs to manage network services and assets, meet service level commitments, implement best practices in service delivery, and even develop and monitor Green IT initiatives. EYE automatically and continually discovers and captures in-depth network data and analytics, and provides integrated fault, device- and flow-based performance management capabilities that help enterprises, service providers, and system integrators reduce network downtime, commit to, deliver, assure and prove service levels, and ensure network configuration compliance. Real-time notifications of physical network and configuration changes, visibility to virtual servers and environments, and open data accessibility prevent user-impacting business service interruptions and enable transparent business-level reporting through high level and detailed reports, corporate dashboards, or mash-ups.

## EYE NPE Integrated SME Network Suite

The Entuity Eye of the Storm Network Professional Edition (EYE NPE) is a new class of network management solution focused on the needs of small to medium enterprises (SMEs). It allows SMEs to manage their networks using enterprise-class technology at an affordable price. EYE NPE provides SMEs with a live, accurate view of their network in order to reduce network downtime and ensure optimal network operation so critical business initiatives can be effectively deployed and efficiently maintained.

EYE NPE provides a succinct suite of the most important functionality for network management, presented in an easy to use, quick to deploy format. EYE NPE delivers extremely fast time to value and low total cost of ownership, resulting in superior overall price-performance. Its wide range of capabilities are the practical middle ground between single function point utilities and tools that are difficult and costly to integrate, and heavily laden frameworks that are difficult to deploy, learn, use, and expensive to support. EYE NPE enables SMEs to quickly and optimally manage their networks.

To learn more about EYE NPE for SMEs or Eye of the Storm Enterprise for medium and large enterprises, please contact your local Entuity Partner, Technosys at 0207 993 2016.



**EMEA Headquarters**  
9a Devonshire Square  
London, EC2M 4YN UK  
T: +44 (0)20 7444 4800  
F: +44 (0)20 7444 4808



**Technosys Limited**  
Talbot House  
204-226 Imperial Drive  
Harrow  
Middlesex. HA2 7HH

T: 0207 993 2016  
E: [greenit@technosysuk.com](mailto:greenit@technosysuk.com)  
W: [www.technosysuk.com](http://www.technosysuk.com)