



CONTENT SUMMARY



Eye of the Storm[®] Enterprise 2010

Unique Business Perspectives for Services Delivery

Table of Contents

Introduction.....	3
EYE InSight Center™ and Perspectives	3
Dynamic Thresholds to Baseline “Normal”	4
Service Model to Represent Dependencies	4
Reduced Risk On Even the Largest, Distributed Networks	5
Informing Decisions with Bundled Graphical Reports	6

Introduction

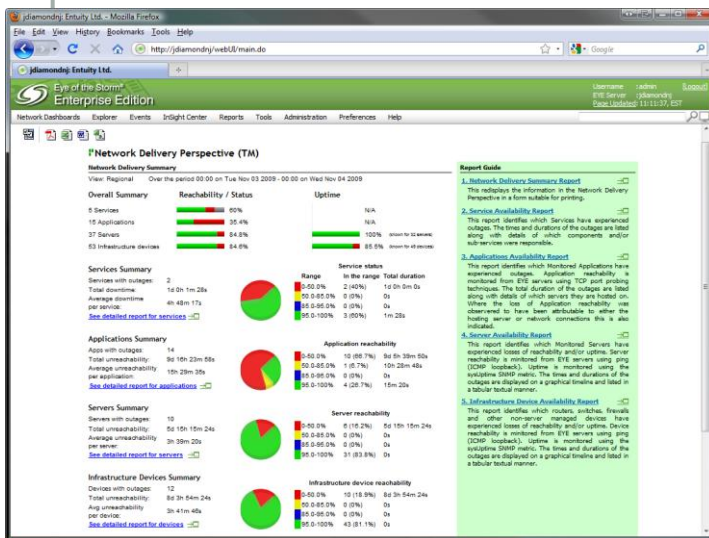
When it comes to network management technology, the focus is far too often at the port or device level when the business driving value of technology is the enabling services delivered across the network. If the goal is the operational economy of cloud computing, the efficiency of virtualization, the improved collaboration of social computing, the economy of unified communications, or the reduced environmental impact of Green IT, how do “red-light/green-light” status indicators or port flapping statistics ensure these objectives?

Eye of the Storm® (EYE) Enterprise 2010 turns the traditional paradigm upside down providing insight focused on services delivery, supported by unrivaled network management details and forensics, and functionality to easily manage strategic distributed technologies and network architectures of medium and large enterprises alike. The EYE network management suite enables IT administrators to finally answer the question of whether their network infrastructure is supporting strategic IT services delivery and provides the advanced analytics as proof. EYE provides contemporary network management functionality that reduces the expense of managing distributed infrastructures and capabilities to provide clear insight to how the network infrastructure is supporting strategic IT services delivery. Regardless of the desired IT initiative, EYE helps reduce operational costs while improving service – enterprise class management at an affordable price.

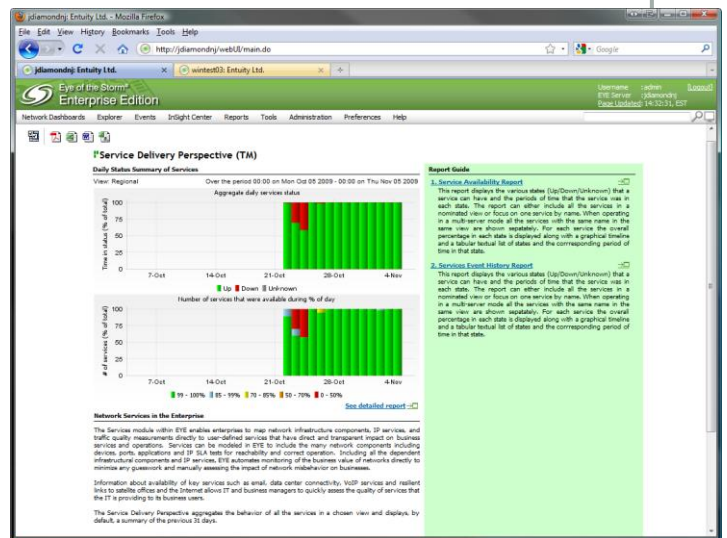
Eye of the Storm Enterprise 2010 is available for the Microsoft Windows Server®, Sun™ Solaris™, Red Hat® Enterprise Linux®, and VMware® ESX Server platforms.

EYE InSight Center™ and Perspectives

The new EYE InSight Center turns traditional network management upside-down; finally enabling administrators to know how the IT infrastructure is supporting key strategic technologies and services delivery. Unlike traditional network management applications that only provide port or device-level information, EYE 2010 includes functionality allowing user-configurable definition of services including all the applications, network services, devices, and servers utilized in its delivery. A range of included logical operators enable the construction of complex dependencies within each service.



The Network Delivery Perspective helps keep your infrastructure optimally performing.



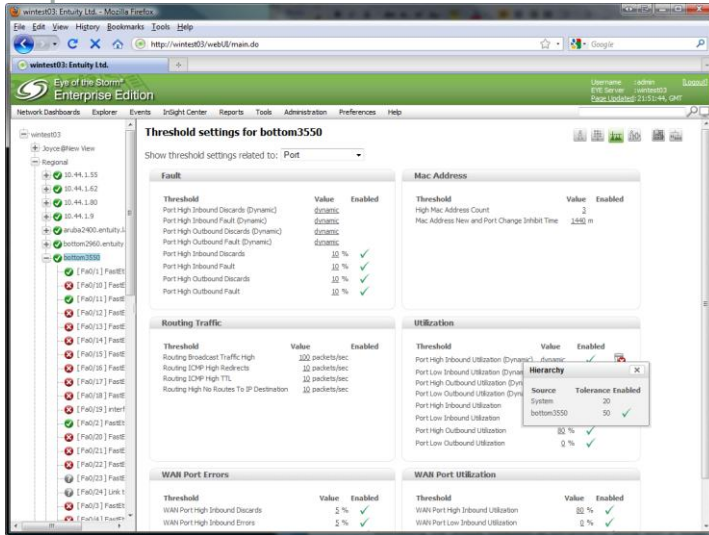
Prevent costly business service degradations and interruptions with EYE's Service Delivery Perspective.

The EYE InSight Center features new Perspectives – business-centric dashboards giving at-a-glance visibility to key operational initiatives. EYE 2010 adds a new *Services Delivery Perspective* providing an innovative, top-level synopsis of your company's strategic technology services, their current status, and how all of the infrastructure components – from servers to applications and network devices – are contributing to their delivery. The new *Network Delivery Perspective* concisely displays pertinent details of services, applications, servers, and infrastructure device availability across the environment. Users can create and configure their own custom perspectives for ultimate versatility.

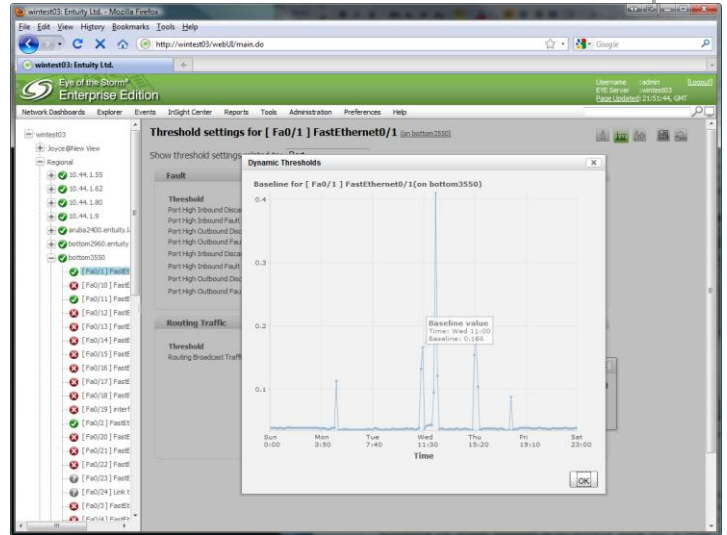
Dynamic Thresholds to Baseline “Normal”

The demands placed by business services on your network change from hour-to-hour throughout the week. EYE 2010 adds Dynamic Threshold functionality to baseline network operational characteristics; giving you insight to “normal” operation allowing you to effectively prioritize and manage performance anomalies. Alerting only when in violation of the baseline, EYE 2010 reduces the operational expense of troubleshooting and following up on incidents created during established periods of network utilization.

Dynamic Thresholds in EYE 2010 are calculated based on a running four week sample for each monitored attribute. A fine granularity of control is available on Dynamic Thresholds down to the individual port level. They can be enabled or disabled on a per device basis, and overridden at a port level, comparable to EYE’s current static thresholds. An absolute tolerance can be specified for each Dynamic Threshold, generating alerts when polled attributes are compared against the baseline values.



Custom Dynamic Thresholds can be tailored for individual devices or ports.



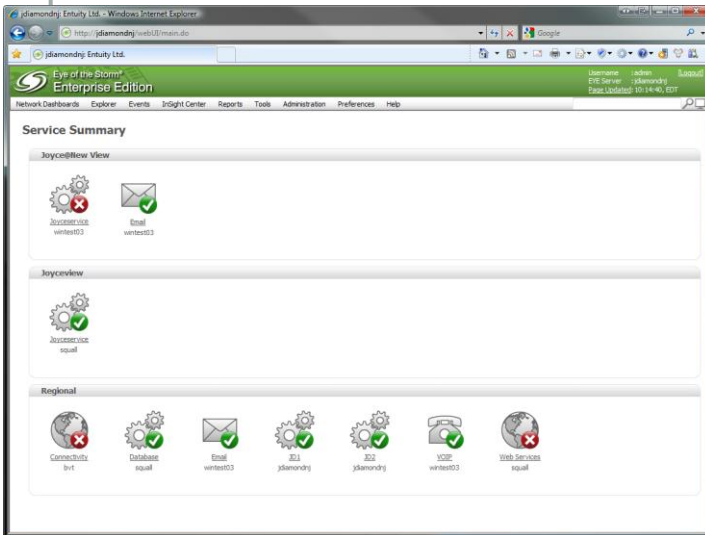
Descriptive graphs clearly display gathered baselines.

Service Model to Represent Dependencies

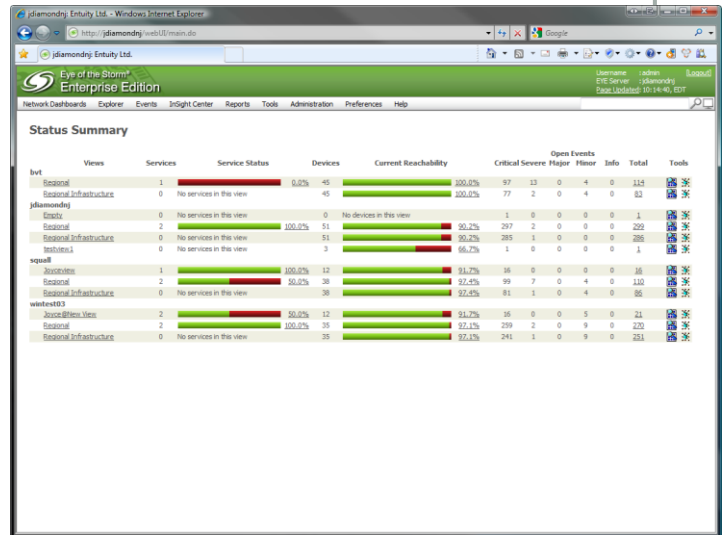
Business services rely upon a broad range of applications, IP services, network devices, servers, and client devices. Successful and sustained service delivery often means unique and complex dependencies between these components. EYE 2010 introduces a new Services Model functionality capable of addressing the unique collection of components along with a range of logical operators to accurately portray complex dependencies. Defining representative services, administrators can monitor and manage how the network infrastructure is serving business needs rather than reporting on the status of individual components. The status and performance of Services then directly map to their effect on business. Outages of any underlying components are then directly visualized against the Services, giving insight to business impact.

Part of the new Service Model, EYE 2010 also includes new functionality to define applications and associate them with particular servers in support of a service. A new web-based “Applications” dashboard is introduced allowing users to view, add, edit, and delete applications against a device while a new “Application Summary” dashboard shows details and history for individual application instances. Any *Network Outage* event raised against the device will indicate any impacted servers and applications.

The EYE Status Summary dashboard is updated in EYE 2010 featuring a graphical summary of the number of services and a snapshot of their status for each view. Service details are hyperlinked for drill-down and further inspection. A new Service Summary dashboard and new service-based reports round out the new functionality and provide additional visibility.



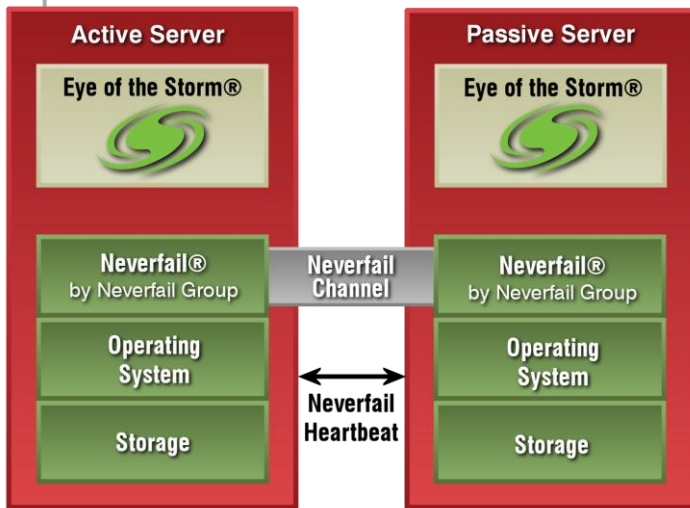
EYE Views enable additional flexibility and control in defining services.



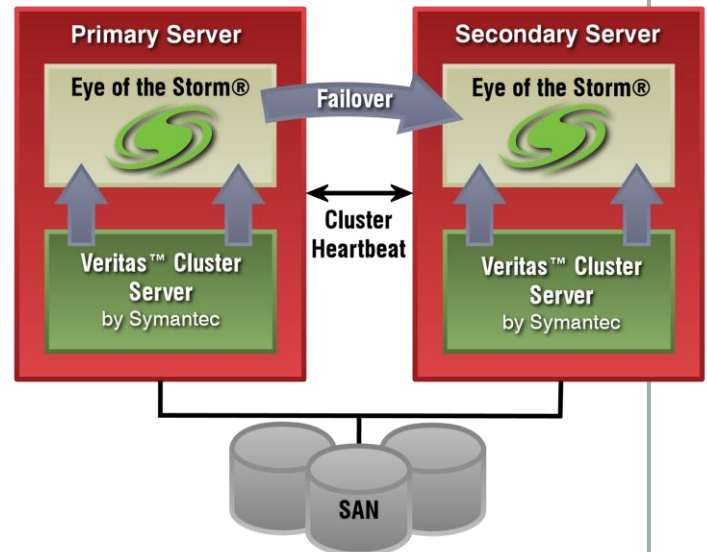
Get a quick, graphical status of configured services in EYE's Status Summary dashboard.

Reduced Risk On Even the Largest, Distributed Networks

While the availability and performance of every network is mission-critical to its organization, management challenges and business risk increases as networks expand and become decentralized. With EYE 2010, new failover capabilities keep your network management system available protecting mission-critical business service delivery and satisfying even the largest of enterprises. The new EYE HA Compatibility Module offers a custom agent for Veritas™ Cluster Server (VCS) from Symantec on the Microsoft Windows, Linux, and Solaris platforms. EYE 2010 has also been validated against NeverFail® from NeverFail Group on the Microsoft Windows platform, requiring no additional adapter. Both solutions offer a range of capabilities for high-availability to meet a variety of needs and budgets. Both 3rd party software products must be purchased directly from the respective manufacturer and installed separately.



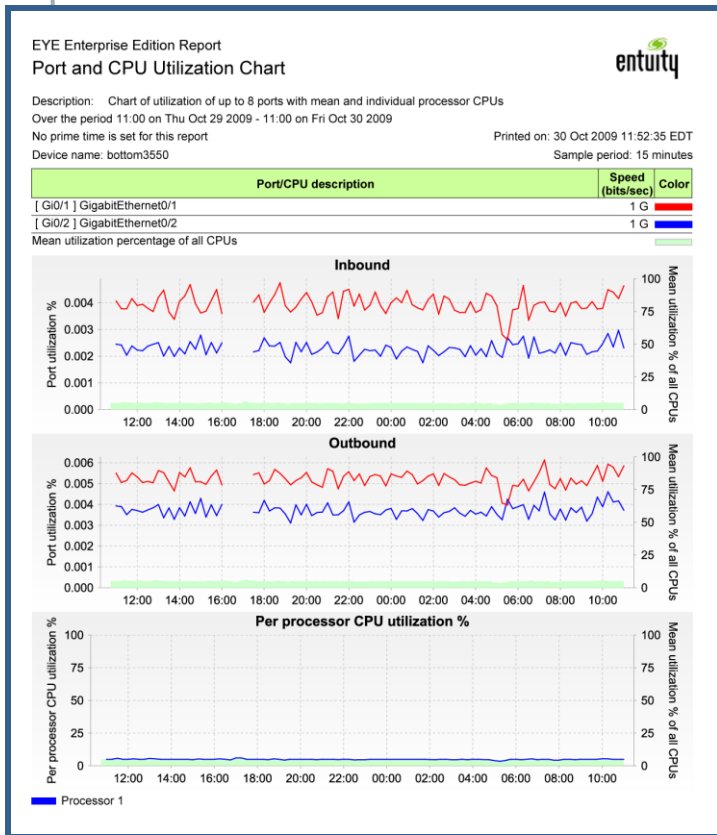
Ensure cost-effective continuous availability of EYE 2010 using NeverFail.



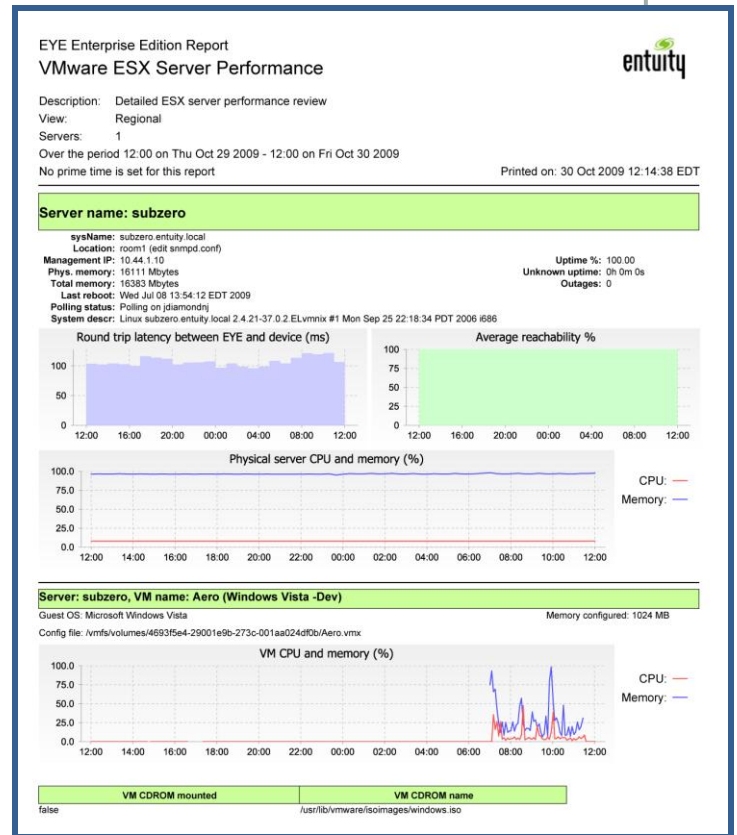
EYE's HA Compatibility Module provides high availability in Veritas Cluster Server environments.

Informing Decisions with Bundled Graphical Reports

Reporting capabilities in EYE 2010 keep pace with the contemporary needs of network managers by including new functionality to help quickly synthesize a broad range of network operational and performance data into actionable and graphically descriptive reports. New interactive flexibility to specify the timeframe, prime time, and options used during report generation delivers documented and relevant network insight into the hands of users in record time. Nearly 20 new reports have been added to EYE's out-of-the-box report bundle – for more than 100 in total – giving users one-click documentation for service and application availability, device reachability and uptime, switch and router summaries, multi-port reports, as well as the several new *InSight Center Perspective* reports. Reports can be automated to run at scheduled intervals and be delivered via email in a range of formats necessary for business correspondence processes.



EYE's Multi-ports reports facilitate trouble-shooting across ports from any number of devices.

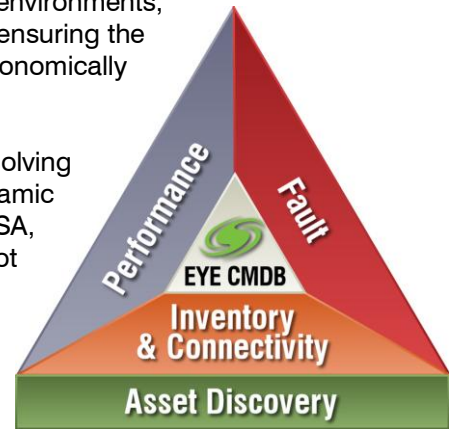


Keep virtualized environments optimally performing with EYE reports.

Eye of the Storm Summary

Entuity offers a complete line of contemporary network management solutions for reducing operational costs while improving services delivery – affordable enterprise class management. Eye of the Storm® (EYE) network management solutions enable IT organizations to quickly and materially reduce costs, and to deliver - and prove - the service levels expected by its customers. EYE gives you insight, control, and predictability of your network's performance and availability - from the core to the edge - with a range of products at price points to match your business model. The EYE product line helps businesses realize the maximum benefit of today's distributed applications, virtualized environments, network-based services, and contemporary data sharing strategies by ensuring the foundational resource for all these initiatives – the network – is economically deployed and optimally performing.

Entuity's customers include Global 2000 companies proactively solving mission-critical business initiatives, leveraging complex and dynamic distributed network environments. A sampling includes: ABB, ACSA, Amtrak, Astra Zeneca, BMC Software, IBM Global Services, Perot Systems, The Royal Bank of Scotland, SASSA, Sony, Visteon, and WorldPay.



Eye of the Storm Enterprise Network Suite

EYE Enterprise Network Suite is the company's flagship scalable, multi-server solution for medium to large enterprises managing the largest and most dynamic networks for some of the most demanding organizations in the world. EYE Enterprise delivers network control and predictability enabling enterprises, system integrators and MSPs to manage network services and assets, meet service level commitments, implement best practices in service delivery, and even develop and monitor Green IT initiatives.

EYE automatically and continually discovers and captures in-depth network data and analytics, and provides integrated fault, device- and flow-based performance management capabilities that help enterprises, service providers, and system integrators reduce network downtime, commit to, deliver, assure and prove service levels, and ensure network configuration compliance. Real-time notifications of physical network and configuration changes, visibility to virtual servers and environments, and open data accessibility prevent user-impacting business service interruptions and enable transparent business-level reporting through high level and detailed reports, corporate dashboards, or mash-ups.

EYE NPE Integrated SME Network Suite

The Entuity Eye of the Storm Network Professional Edition (EYE NPE) is a new class of network management solution focused on the needs of small to medium enterprises (SMEs). It allows SMEs to manage their networks using enterprise-class technology at an affordable price. EYE NPE provides SMEs with a live, accurate view of their network in order to reduce network downtime and ensure optimal network operation so critical business initiatives can be effectively deployed and efficiently maintained.

EYE NPE provides a succinct suite of the most important functionality for network management, presented in an easy to use, quickly to deploy format. EYE NPE delivers extremely fast time to value and low total cost of ownership, resulting in superior overall price-performance. Its wide range of capabilities are the practical middle ground between single function point utilities and tools that are difficult and costly to integrate, and heavily laden frameworks that are difficult to deploy, learn, use, and expensive to support. EYE NPE enables SMEs to quickly and optimally manage their networks.

To learn more about EYE NPE for SMEs or Eye of the Storm Enterprise for medium and large enterprises, please contact your local Entuity Partner, Technosys at +44 (0) 208 429 5955.



EMEA Headquarters
9a Devonshire Square
London, EC2M 4YN UK
T: +44 (0)20 7444 4800
E: info@entuity.com



Technosys Limited
Talbot House
204-226 Imperial Drive
Harrow
Middlesex, HA2 7HH

T: 0207 993 2016
E: greenit@technosysuk.com
W: www.technosysuk.com